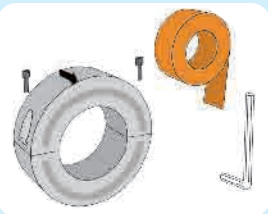
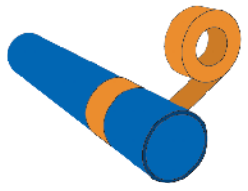


Installation of the Sialex systems in the private household



1. Installation material includes:

- 2 x retaining screws,
- 1 x Allen key (3/16"),
- 1 x roll insulating tape,
- 1 x packing tape



2. Identify the installation location:

(Phoenix recommends installation on cold water pipe after water meter, if one is installed).

- Ensure the device will be located at least **50 cm** from electrical outlets. (Electrical motors, electrical sockets etc).

- If possible the SialexRing installation should be made onto a metal section of pipe. (Pipe material can however be made from any material).

- Clean installation area with a cloth or brush to remove extraneous material from pipe's surface Apply insulating tape to pipe (as shown) to protect against "galvanic reaction".

- Apply insulating tape to the installation site on the pipe (to cover approximately 8 -10 cm on the pipe)

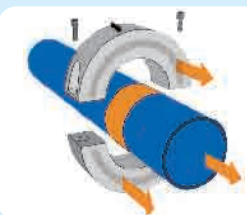


3. Installing the SialexRing:

-Ensure Ring inlays and text are facing in the direction of the water flowing through the pipe.

Secure the two Ring halves using the Allen key and screws provided.

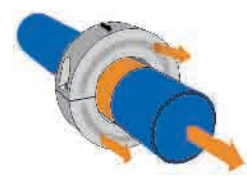
Ensure that both halves make complete contact when in place.



4. Packing Tape:

-Due to pipe sizing there may be a "gap" between the inner circumference of the Ring and the pipe. In such a case additional insulating tape or an approved "non conductive" packing material should be used to ensure the Ring is held firmly in place and the Ring to pipe gap is consistent all around the pipe.

A "Ring of pipe gap" of up to 4 mm will not impact upon the Rings performance.



5. Humidity:

- If installation is in an area of "high" humidity (in cellars for example), cover the Ring with a waterproof material (ex. Polyurethane bag). Tape both ends of the cover to the pipe ensuring the Ring is sealed into the bag. Puncture the base of the cover to allow trapped moisture to escape.